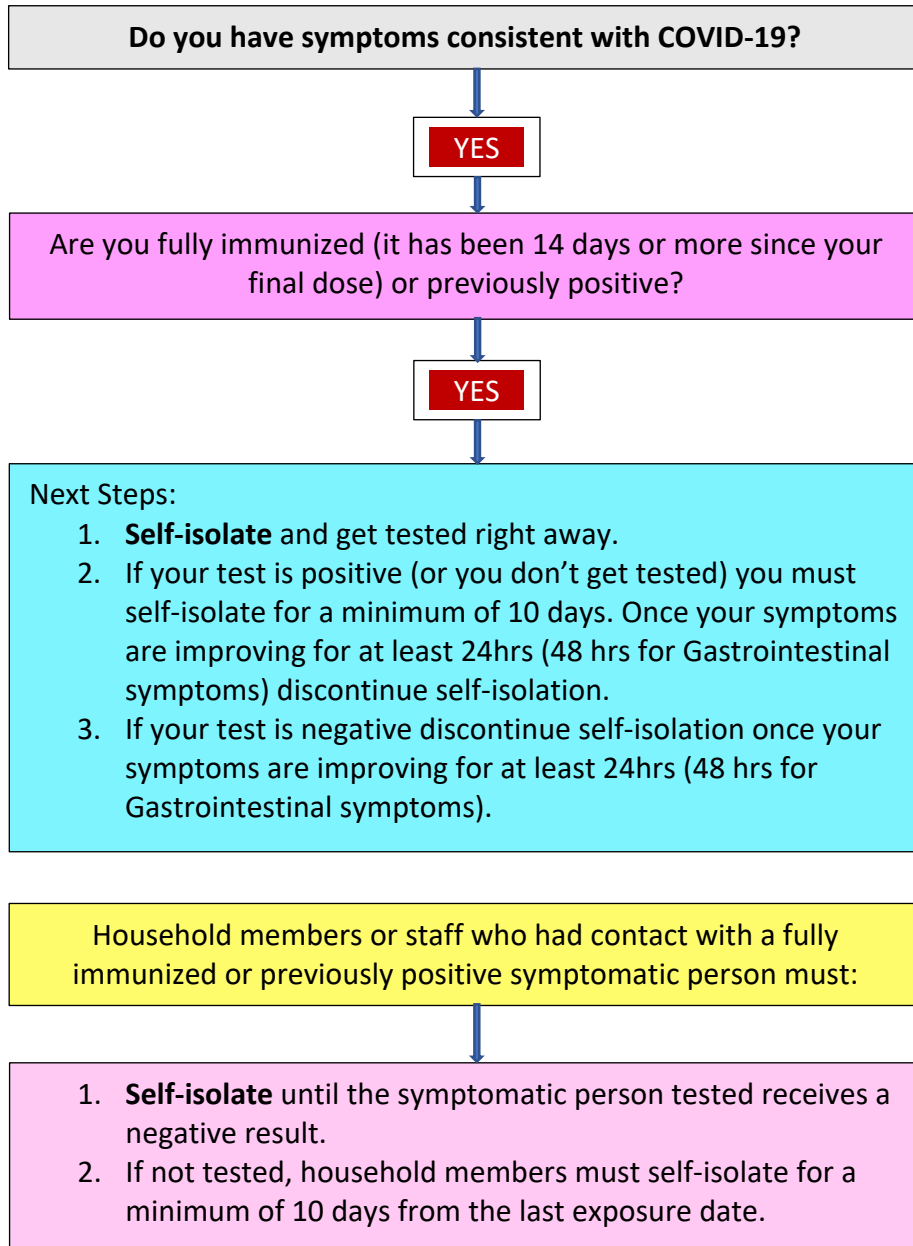
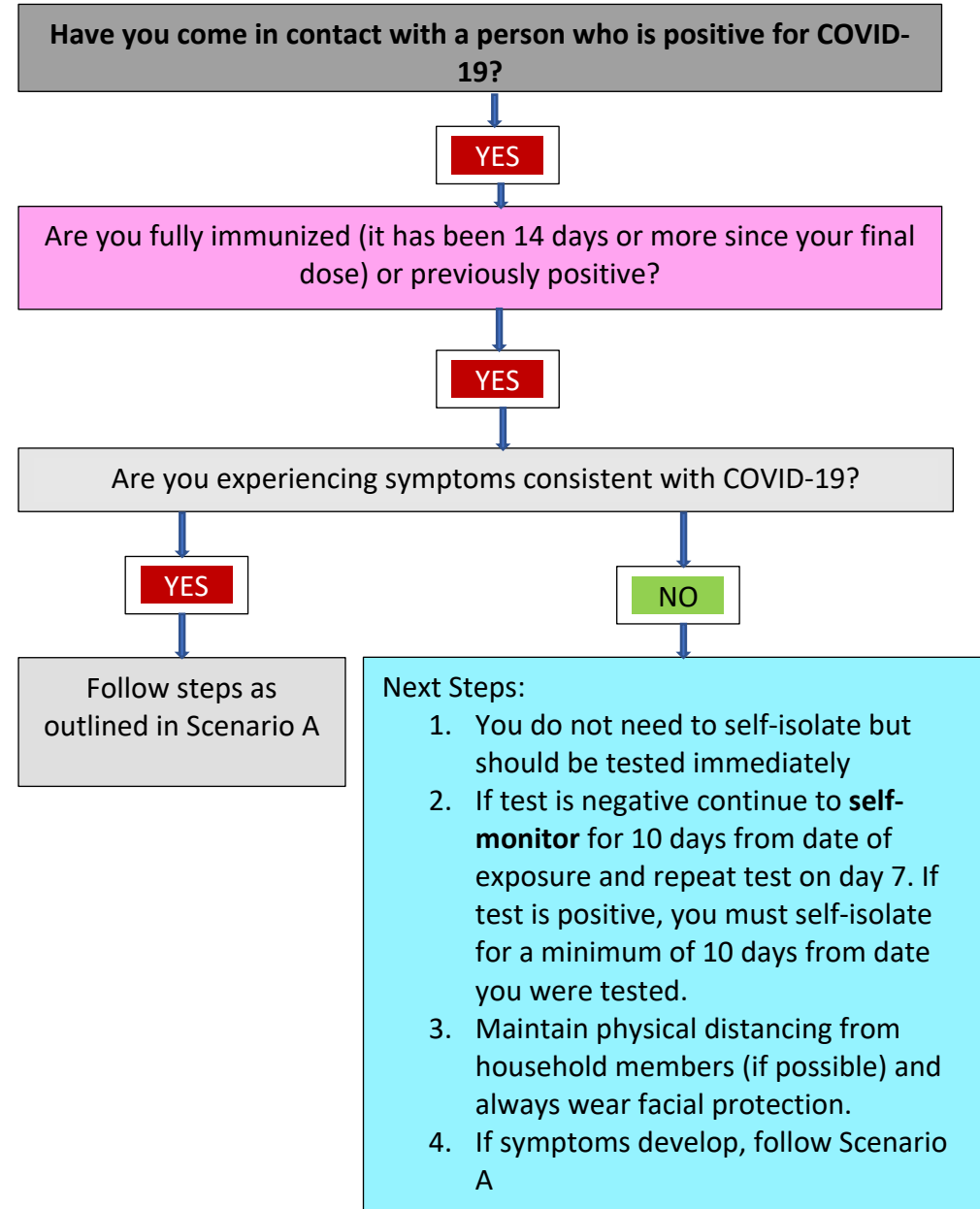


Testing and Clearance Guidance
People who are Fully Immunized and/or Previously Positive \leq 90 Days

Scenario A



Scenario B



Testing and Clearance Guidance
People who are Not Fully Immunized and/or Previously Positive

Scenario C

Do you have symptoms consistent with COVID-19?

YES

Are you fully immunized (it has been 14 days or more since your final dose) or previously positive?

NO

Next steps:

1. **Self-isolate** and get tested right away.
2. If your test is positive (or you don't get tested), you must self-isolate for a minimum of 10 days. Once your symptoms are improving for at least 24hrs (48 hrs for Gastrointestinal symptoms) discontinue self-isolation.
3. If your test is negative, you must continue to self-isolate it is recommended you repeat testing on or after day 7. Once your symptoms are improving for at least 24hrs (48 hrs for Gastrointestinal symptoms) discontinue self-isolation.

Household members or staff who had contact with a symptomatic person who is not fully immunized or previously positive:

1. If they are fully immunized, they do not need to self-isolate.
2. If they are not fully immunized, they should self-isolate while awaiting the persons test results only leave the home for essential reasons (i.e., attend work or school).
3. If the persons results are positive any household member not fully immunized must self-isolate for 10 days from the date of last exposure.

Scenario D

Have you come in contact with a person who is positive for COVID-19?

YES

Are you fully immunized (it has been 14 days or more since your final dose) or previously positive?

NO

Next steps:

1. **Self-isolate** and get tested right away
2. If your test is positive (or you don't get tested), you must self-isolate for a minimum of 10 days, continue to monitor for symptom development.
3. If your test is negative, you must continue to self-isolate it is recommended you repeat testing on or after day 7, **if you develop symptoms get tested and follow next steps for Scenario C**

Household members or staff who had contact with a person who is not fully immunized or previously positive:

1. If they are fully immunized, they do not need to self-isolate.
2. If they are not fully immunized, they should stay at home only leaving the home for essential reasons (i.e., attend work or school).
3. If the persons results are positive any household member not fully immunized must **self-isolate** for 10 days from the date of last exposure.