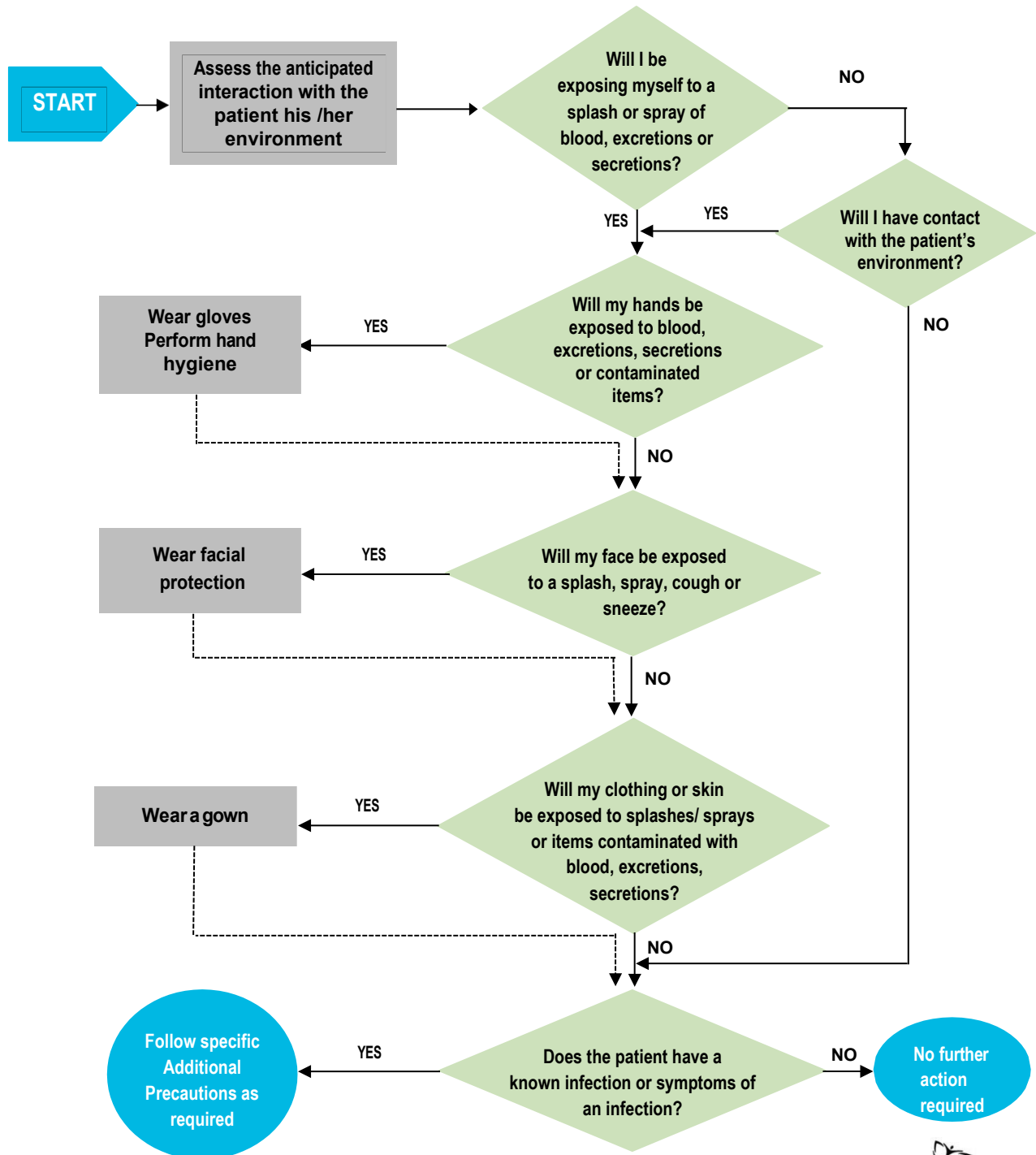


Risk Algorithm to Guide PPE Use

This tool is an excerpt from the [Best Practices for Infection Prevention and Control for Clinical Office Practice](#) (Appendix C) and was reformatted for ease of use.



ipac@oahpp.ca

Personal Protective Equipment Ontario Agency for Health Protection and Promotion (Public Health Ontario). Risk algorithm to guide PPE use [Internet]. Toronto, ON: Queen's Printer for Ontario; 2013 [cited 2021 Mar 26]. Available from: <https://www.publichealthontario.ca/-/media/documents/C/2013/clinical-office-risk-algorithmppe.pdf?la=en>