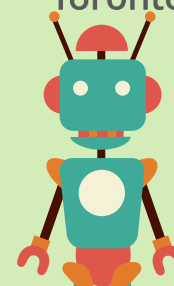


# LAWSON CHILDREN'S RESPITE



Supporting Rights & Choices



Mon

Tue

Wed

Thurs

Fri

Sat

Sunday

<b>May 2<sup>nd</sup> to 8<sup>th</sup></b>	<i>Closed</i>	After School Respite	After School Respite	After School Respite	<i>Closed</i>	Day Respite	Day Respite
<b>May 9<sup>th</sup> to 15<sup>th</sup></b>	INTAKE DAY	After School Respite	After School Respite	After School Respite	INTAKE DAY	<i>Closed</i>	<i>Closed</i>
<b>May 16<sup>th</sup> to 22<sup>nd</sup></b>	<i>Closed</i>	After School Respite	After School Respite	After School Respite	<i>Closed</i>	Day Respite	Day Respite
<b>May 23<sup>rd</sup> to 29<sup>th</sup></b>	INTAKE DAY	After School Respite	After School Respite	After School Respite	INTAKE DAY	<i>Closed</i>	<i>Closed</i>

**Afterschool Respite:** respite offered for families and children looking for Support in the after-school hours

**Intake Day:** Designated days for meeting new children and families seeking respite and conduct observation visits to complete intake.

**Weekend Day Respite:** Offered from 9am to 3:30pm on Saturday and Sunday.

Contact Information and Service Requests: Lawson - [lawsonrespite@cltoronto.ca](mailto:lawsonrespite@cltoronto.ca) P- 647 729-1657  
 Ennerdale - [respite.ennerdale@cltoronto.ca](mailto:respite.ennerdale@cltoronto.ca) P- 647-729-0447

# Ennerdale Children's Respite



	Mon	Tue	Wed	Thurs	Fri	Sat	Sunday
<b>May 2<sup>nd</sup> to 8<sup>th</sup></b>	INTAKE DAY	After School Respite	After School Respite	After School Respite	INTAKE DAY	Closed	Closed
<b>May 9<sup>th</sup> to 15<sup>th</sup></b>	Closed	After School Respite	After School Respite	After School Respite	Closed	Day Respite	Day Respite
<b>May 16<sup>th</sup> to 22<sup>nd</sup></b>	INTAKE DAY	After School Respite	After School Respite	After School Respite	INTAKE DAY	Closed	Closed
<b>May 23<sup>rd</sup> to 29<sup>th</sup></b>	Closed	After School Respite	After School Respite	After School Respite	Closed	Day Respite	Day Respite

**Afterschool Respite:** respite offered for families and children looking for support in the after-school hours

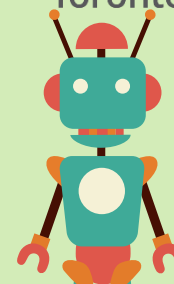
**Intake Day:** Designated days for meeting new children and families seeking respite and conduct observation visits to complete intake.

**Weekend Day Respite:** Offered from 9am to 3:30pm on Saturday and Sunday.

# LAWSON CHILDREN'S RESPITE



Supporting Rights & Choices



**Mon**

**Tue**

**Wed**

**Thurs**

**Fri**

**Sat**

**Sunday**

<b>May 30<sup>th</sup> to June 5<sup>th</sup></b>	<i>Closed</i>	After School Respite	After School Respite	After School Respite	<i>Closed</i>	Day Respite	Day Respite
<b>June 6<sup>th</sup> to 12<sup>th</sup></b>	INTAKE DAY	After School Respite	After School Respite	After School Respite	INTAKE DAY	<i>Closed</i>	<i>Closed</i>
<b>June 13<sup>th</sup> to 19<sup>th</sup></b>	<i>Closed</i>	After School Respite	After School Respite	After School Respite	<i>Closed</i>	Day Respite	Day Respite
<b>June 20<sup>th</sup> to 26<sup>th</sup></b>	INTAKE DAY	After School Respite	After School Respite	After School Respite	INTAKE DAY	<i>Closed</i>	<i>Closed</i>

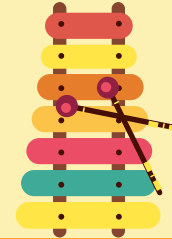
**Afterschool Respite:** respite offered for families and children looking for Support in the after-school hours

**Intake Day:** Designated days for meeting new children and families seeking respite and conduct observation visits to complete intake.

**Weekend Day Respite:** Offered from 9am to 3:30pm on Saturday and Sunday.

Contact Information and Service Requests: Lawson - [lawsonrespite@cltoronto.ca](mailto:lawsonrespite@cltoronto.ca) P- 647 729-1657  
 Ennerdale - [respite.ennerdale@cltoronto.ca](mailto:respite.ennerdale@cltoronto.ca) P- 647-729-0447

# Ennerdale Children's Respite



	Mon	Tue	Wed	Thurs	Fri	Sat	Sunday
<b>May 30<sup>th</sup> to June 5<sup>th</sup></b>	INTAKE DAY	After School Respite	After School Respite	After School Respite	INTAKE DAY	Closed	Closed
<b>June 6<sup>th</sup> to 12<sup>th</sup></b>	Closed	After School Respite	After School Respite	After School Respite	Closed	Day Respite	Day Respite
<b>June 13<sup>th</sup> to 19<sup>th</sup></b>	INTAKE DAY	After School Respite	After School Respite	After School Respite	INTAKE DAY	Closed	Closed
<b>June 20<sup>th</sup> to 26<sup>th</sup></b>	Closed	After School Respite	After School Respite	After School Respite	Closed	Day Respite	Day Respite

**Afterschool Respite:** respite offered for families and children looking for support in the after-school hours

**Intake Day:** Designated days for meeting new children and families seeking respite and conduct observation visits to complete intake.

**Weekend Day Respite:** Offered from 9am to 3:30pm on Saturday and Sunday.