

## Ennerdale Children's Respite

**Location: Dufferin & Eglinton**



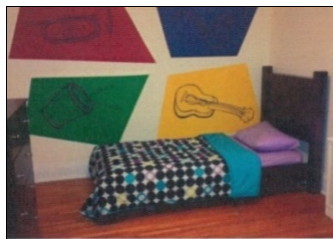
### Eligibility

The child/youth must have a primary diagnosis of Autism Spectrum Disorder, and be between the ages of 2-17.

Ennerdale is a 3 bedroom respite program with a 1:2 staff/child ratio. All bookings are done by the program supervisor or designate. Where possible your child will be matched with other children of familiar age and ability.

Children have the option of spending the night or just a few hours. Activities include toys, arts and craft, games, movies and community outings.

Children will receive interactive support from trained and experienced staff in supporting the unique social emotional and communication needs of children. All meals and snacks are provided. Any dietary and religious restrictions are accommodated.



To arrange a tour, contact: 647.729.0447  
[respite.ennerdale@cltoronto.ca](mailto:respite.ennerdale@cltoronto.ca)

## Lawson Children's Respite

**Location: Ellesmere & McCowan**



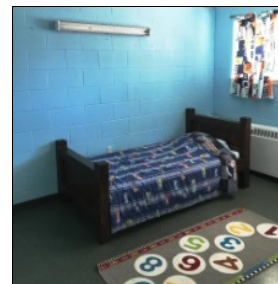
### Eligibility

The child/youth must have a primary diagnosis of having an Intellectual Disability or Autism Spectrum Disorder and be between the ages of 2-17.

Lawson consists of 2 units with a 1:2 staff/child ratio. Children have the option of spending the night or just a few hours. Activities include; sensory room, outdoor play-ground, games, arts, & crafts, movies, computers, personal internet access and all outings are planned to meet the needs of the individual.

Children will receive interactive support from trained and experienced staff in supporting the unique social emotional and communication needs of children. All meals and snacks are provided. Any dietary and religious restrictions are accommodated.

Lawson Children's Respite program supports children of all abilities, families and caregivers will receive the attention and support to meet the needs of their child during their short break.



To arrange a tour, contact: 647.729.1657  
[lawsonrespite@cltoronto.ca](mailto:lawsonrespite@cltoronto.ca)