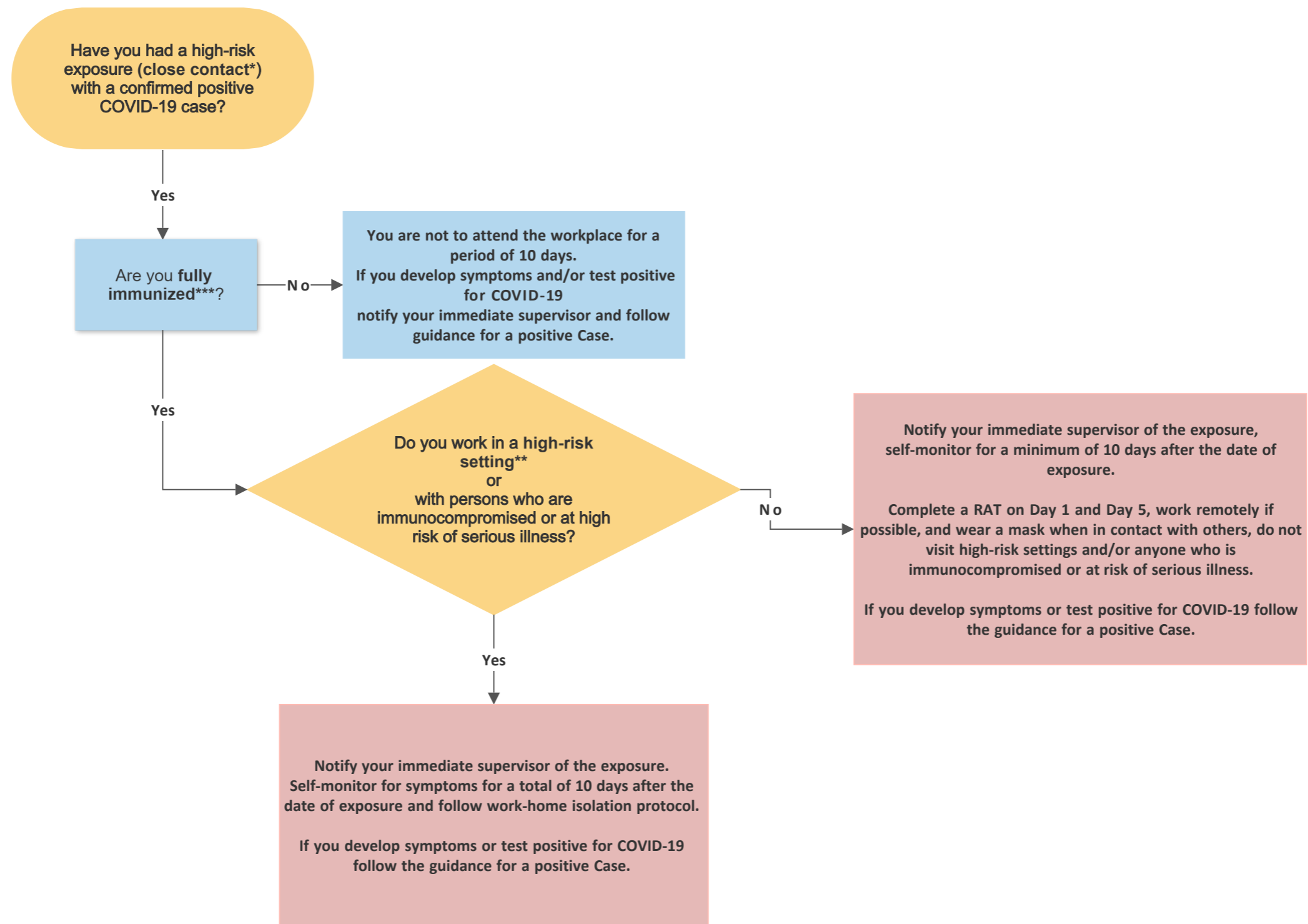


COVID-19 Testing and Clearance for Staff identified as a high-risk exposure (close contact*) with a confirmed Positive COVID-19 Case



*Definition of Close Contact:

Public Health defines an individual who has a high risk exposure as having close contact with an infected person during the 48 hrs prior to the infected person's symptom onset if symptomatic or 48 hrs prior to the specimen collection date (whichever is earlier/applicable) and until the case has completed their self-isolation period; and were in close proximity (less than 2 meters) for at least 15 minutes or for multiple short periods of time without measures such as masking, distancing, and/or use of personal protective equipment depending on the nature of the contact. Examples of high-risk exposures include anyone living in the same household during the infectious period, had direct contact with infectious body fluids of the infected person (e.g., coughed on or sneezed on), were in close proximity for more than 15 mins or for multiple short periods of time without wearing a mask.

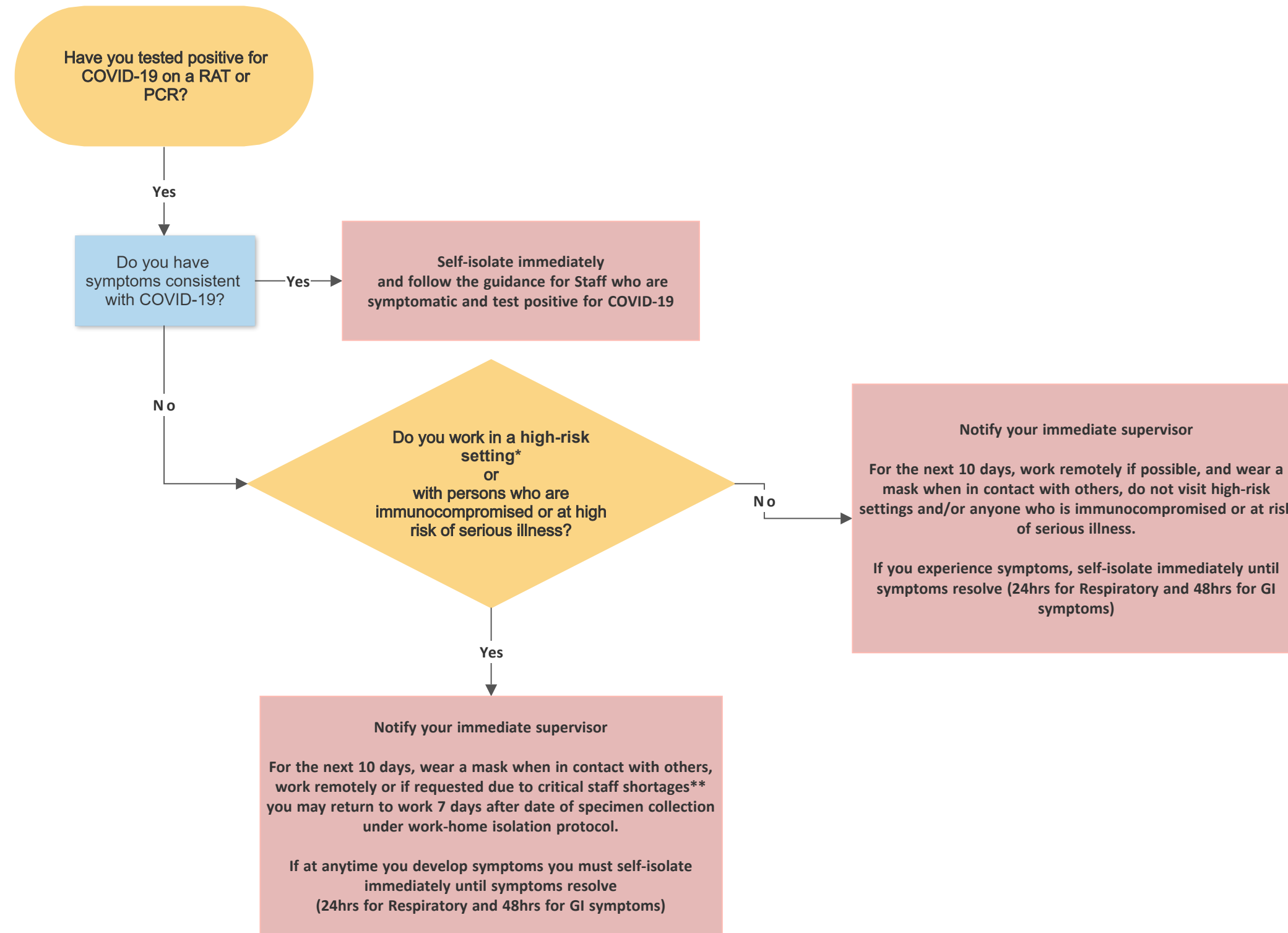
**** Definition of High-Risk Setting:** a high-risk setting is defined as hospitals, complex continuing care facilities, congregate living setting with medically and socially vulnerable individuals, including but not limited to long- term care homes, retirement homes, First Nation Elder care lodges, group homes, shelters, hospices, correctional institutions, and hospital schools. Any CLTO location identified as high-risk by the OHS/Operations. This may include any location where high-risk immunocompromised individuals are supported.

*****Definition of Fully Immunized:** a person is considered fully immunized against COVID-19 if they are up to date with all recommended COVID-19 vaccine doses, including any booster dose (s) for which they are eligible.

References:

1. Ministry of Health (v.2.0 May 24, 2022) "Staying Up to Date With COVID-19 Vaccines: Recommended Doses"
2. Ministry of Health (v. 15 August, 31, 2022) "Management of Cases and Contacts of COVID-19 in Ontario".

COVID-19 Testing and Clearance for Staff who test positive (RAT or PCR) for COVID-19 and are Asymptomatic



COVID-19 Symptoms include fever/chills, cough, shortness of breath, decrease loss of smell or taste and two or more of the following: sore throat, headache, extreme fatigue, runny nose/nasal congestion, muscle ache/joint pain, and gastrointestinal symptoms (nausea, vomiting, diarrhea). Refer to COVID-19 Reference Document for Symptoms

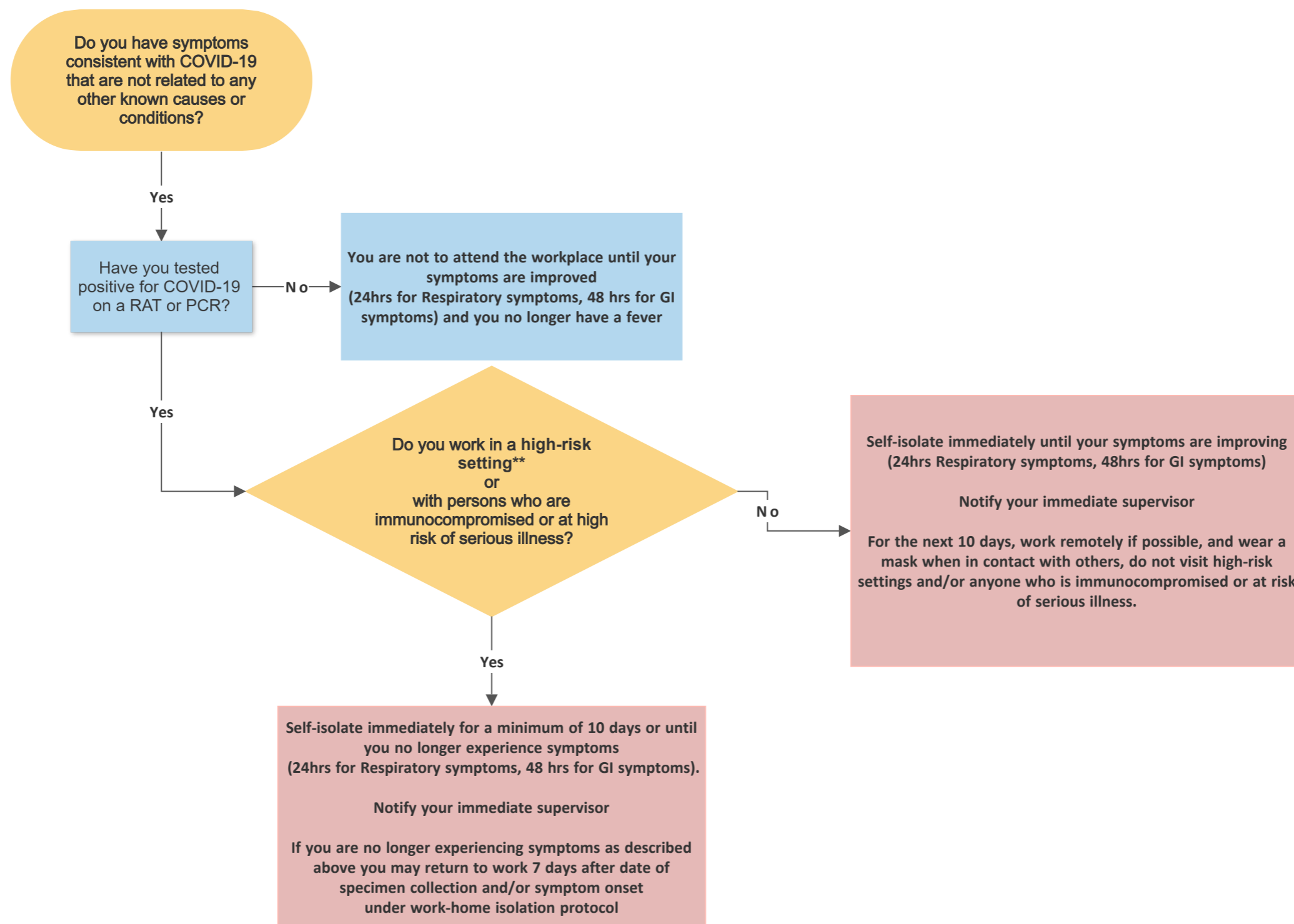
***Definition of High-Risk Setting:** a high-risk setting is defined as hospitals, complex continuing care facilities, congregate living setting with medically and socially vulnerable individuals, including but not limited to long-term care homes, retirement homes. First Nation Elder care lodges, group homes, shelters, hospices, correctional institutions, and hospital schools. Any CLTO location identified as high-risk by the OHS/Operations. This may include any location where high-risk immunocompromised individuals are supported.

****Critical Staff Shortage:** when service delivery is compromised due to insufficient staffing levels a COVID-19 positive case that is asymptomatic and works in a highest risk setting and only cares for COVID-19 positive residents or residents who have recently recovered from COVID-19 infection, or for staff who do not have direct resident contact, may return to work 7 days after date of specimen collection and provided they continue to be asymptomatic. In outbreak situations, staff may return earlier than 7 days in consultation with OHS.

References:

1. Ministry of Health (v.2.0 May 24, 2022) "*Staying Up to Date With COVID-19 Vaccines: Recommended Doses*"
2. Ministry of Health (v. 15 August, 31, 2022) "*Management of Cases and Contacts of COVID-19 in Ontario*".

COVID-19 Testing and Clearance for Staff who have COVID-19 related symptoms and/or test positive (RAT or PCR) for COVID-19



COVID-19 Symptoms include fever/chills, cough, shortness of breath, decrease loss of smell or taste and two or more of the following: sore throat, headache, extreme fatigue, runny nose/nasal congestion, muscle ache/joint pain, and gastrointestinal symptoms (nausea, vomiting, diarrhea). Refer to COVID-19 Reference Document for Symptoms

**** Definition of High-Risk Setting:** a high-risk setting is defined as hospitals, complex continuing care facilities, congregate living setting with medically and socially vulnerable individuals, including but not limited to long-term care homes, retirement homes. First Nation Elder care lodges, group homes, shelters, hospices, correctional institutions, and hospital schools. Any CLTO location identified as high-risk by the OHS/Operations. This may include any location where high-risk immunocompromised individuals are supported.

References:

1. Ministry of Health (v.2.0 May 24, 2022) *"Staying Up to Date With COVID-19 Vaccines: Recommended Doses"*
2. Ministry of Health (v. 15 August, 31, 2022) *"Management of Cases and Contacts of COVID-19 in Ontario"*.